

prevention of NSAID-induced ulcers ( Lazzaroni M *et al.*, 1999). Omeprazole at a dosage of 20 mg daily has been shown to be better tolerated and associated with a lower relapse rate than misoprostol (Cytotec®) at a dosage of 200 mcg twice daily. Omeprazole and misoprostol appear to be equally effective in preventing NSAID-induced ulcer ( Hawkey CJ *et al* ,1998 ).

special precaution should be present when using PPIs for Pregnant, breast feeding and liver conditions (Nava-Ocampo AA *et al* ,2006).

The general chemical backbone structure for the PPIs is shown in figure (2).

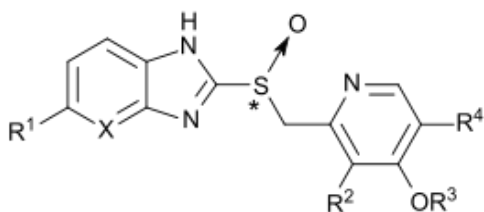


Figure 2 :Chemical structure of PPIs

Where, R<sub>1</sub> , R<sub>2</sub> ,R<sub>3</sub> and R<sub>4</sub>, are identified in table (1) (Shin *et al.*, 2008 ) .